



Laud Mews, Ipswich, Suffolk

£1,400

 4
  2
  2
  C

A great opportunity to rent this four bedroom two reception detached house located in this private cul-de-sac location in this popular IP3 area close to local shops.

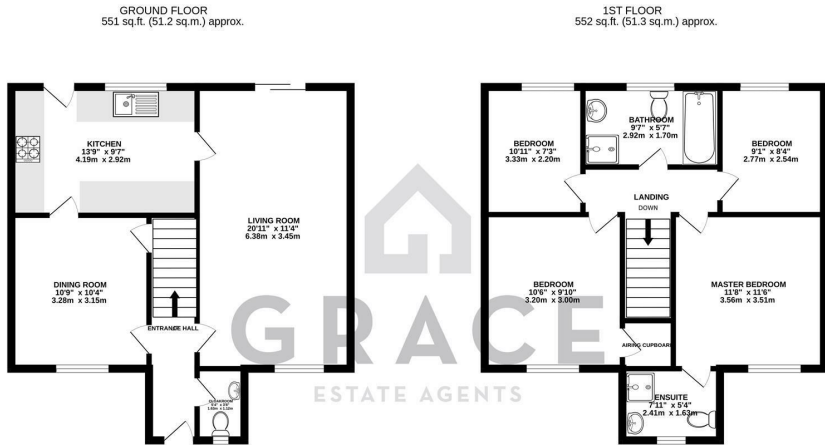
- CUL-DE-SAC-LOCATION
- DETACHED
- FOUR BEDROOMS
- TWO RECEPTIONS
- CLOAKROOM
- EN-SUITE
- FAMILY BATHROOM
- DETACHED GARAGE
- AMPLE PARKING
- 20'11 LIVING ROOM

£1,400

Viewing

Please contact our Grace Estate Agents Office on 01473 747728 if you wish to arrange a viewing appointment for this property or require further information.

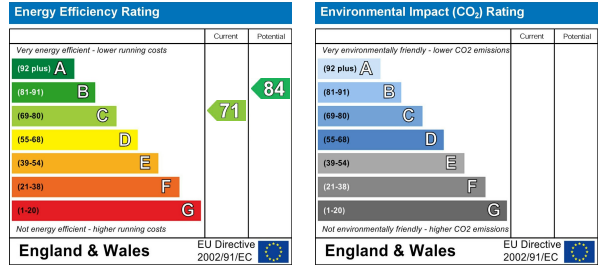




TOTAL FLOOR AREA: 1103 sq.ft. (102.5 sq.m.) approx.

Whilst every attempt has been made to ensure the accuracy of the floorplans contained herein, measurements of doors, windows, rooms and any other items are approximate and no responsibility is taken for any error, omission or mis-statement. This plan is for illustrative purposes only and should be used as such by any prospective purchaser. The services, systems and appliances shown have not been tested and no guarantee as to their operability or efficiency can be given.

Made with Metropac 5/2023



These particulars, whilst believed to be accurate are set out as a general outline only for guidance and do not constitute any part of an offer or contract. Intending purchasers should not rely on them as statements of representation of fact, but must satisfy themselves by inspection or otherwise as to their accuracy. No person in this firms employment has the authority to make or give any representation or warranty in respect of the property.